

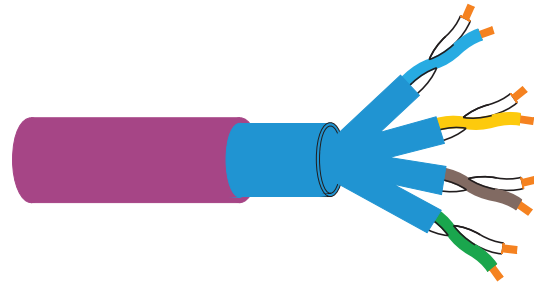
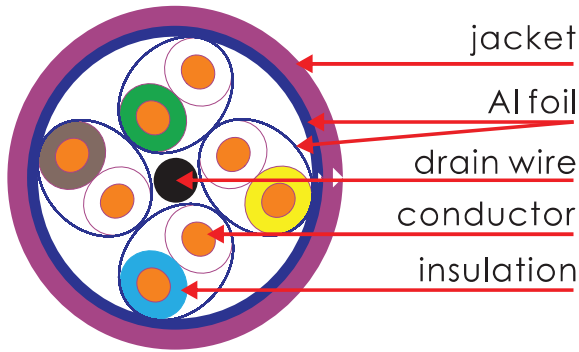


# **DATASSHEET**

**ITEM NO : KEG.X6ABB**  
**DESCRIPTION CATEGORY 6A CABLE**  
**F/FTP, 4 PAIRS, 100  $\Omega$**



**KEG.X6A BB**  
**CATEGORY 6A CABLE,F/FTP,4 PAIRS,100 Ω**



**Description**

Complies with Class Ea & Cat 6A standards, Supports applications up to 500MHz.

**Characteristic**

**Physical**

**Conductor**

Material: solid bare copper  
Diameter:  $0.57 \pm 0.005\text{mm}$   
Elongation ratio:  $\geq 15\%$   
AWG: 23

**Insulation**

Material: FOAM PE  
Diameter:  $1.35\text{mm} \pm 0.05\text{mm}$   
Drain wire: tinned copper  
Shielding: AL Foil

**Out jacket**

Material: LSZH  
Color: Optional  
Thickness: 0.5mm  
Diameter:  $7.5 \pm 0.5\text{mm}$

**Electrical**

Linear resistance(100m):  $\leq 9.5 \Omega$   
Mutual capacity(100m):  $\leq 5.6\text{nF}$   
Unbalance capacity(100m):  $\leq 330\text{pF}$   
Characteristic impedance:  $100 \pm 15 \Omega$  (1-250MHz),  $100 \pm 20 \Omega$  (250-500MHz)  
Velocity of propagation: Approx 66% of C(at 500MHz)

**Envirolmental**

working temperature:  $-40^\circ\text{C}$  to  $+70^\circ\text{C}$



**Transmission performance (20 °C , 100m)**

Frequency (MHz)	ReturnLoss Min(dB)	Attenuation Max(dB/100m)	NEXT Min(dB)	PSNEXT Min(dB)	EL FEXT Min	PSELFEXT Min(dB/100m)
4	23	3.8	66.3	63.3	56	53
8	24.5	5.3	61.8	58.8	49.9	46.9
10	25	5.9	60.3	57.3	48	45
16	25	7.5	57.2	54.2	43.9	40.9
20	25	8.4	55.8	52.8	42	39
25	24.3	9.4	54.3	51.3	40	37
31.25	23.6	10.5	52.9	49.9	38.1	35.1
62.5	21.5	15	48.4	45.4	32.1	29.1
100	20.1	19.1	45.3	42.3	28	25
200	18.0	27.6	40.8	37.8	22	19
250	17.3	31.1	39.3	36.3	20	17
300	17.3	34.3	38.1	35.1	18.5	15.5
400	17.3	40.1	36.3	33.3	16	13
500	17.3	45.3	34.8	31.8	14	11

**Standard**

ISO/IEC 11801  
TIA/EIA 568-C.2  
...

**Application**

10 BASE-T Ethernet  
100 BASE-T Fast Ethernet  
100 BASE-TX Fast Ethernet  
155 Mbit ATM  
625 Mbit ATM  
1.2 Gbit ATM

**Install info**

Bending radius:  $\geq 10 \times \text{diameter}$

**Packing info**

Length: 305m or 500m a plywood drum  
Weight: 55 Kg/KM

**all info**