

Fiber Optic Splice Closure

General description: Fiber Optic Splice Closure can be used in manhole, in handhole, aerial-hanger, wall-mounting, be directly buried and pedestal.



M2 is designed for both single fiber and ribbon fiber.
Excessive fibers can be stored in storage basket behind the splice trays.
Per closure can accommodate up to 4 pieces of trays.

Dimension

Height: 54cm

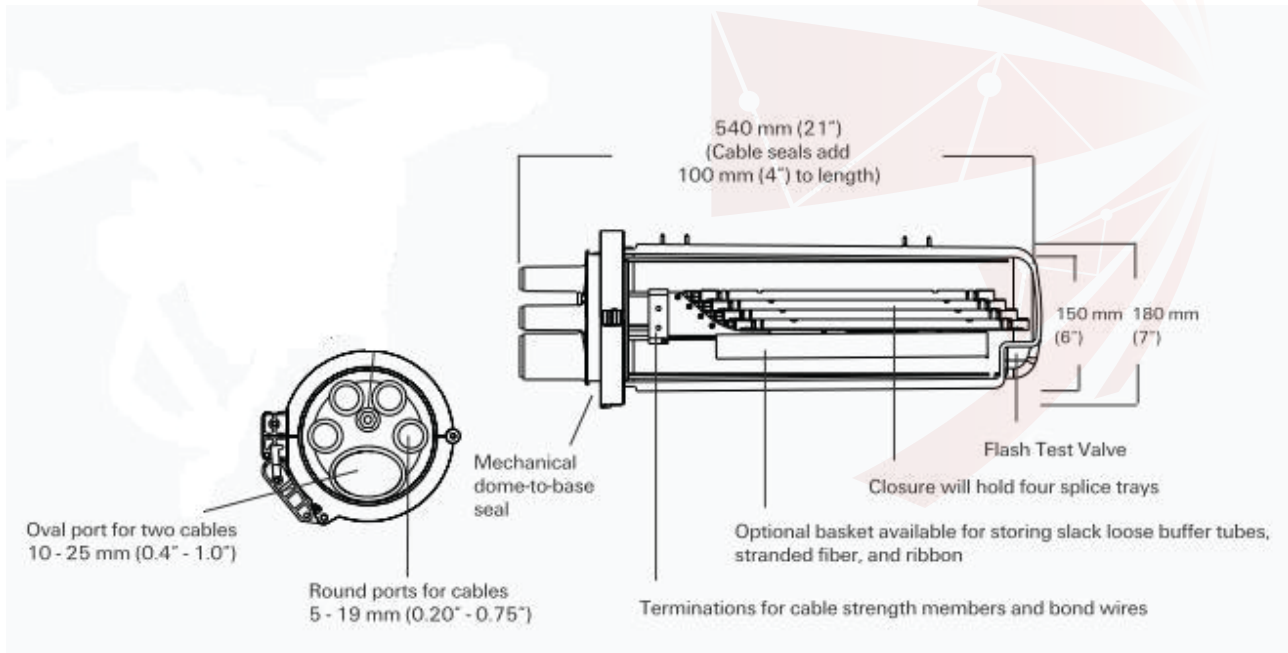
Base diameter: 16cm

closure ring dia.: 21cm

4 small holes + 1 oval hole

The diameter of the small holes is 2.0cm. The major axis of the oval hole (inside wall) is 6cm, and the diameter of the small holes is 2.0cm. The major axis of the oval hole (inside wall) is 6cm, and the shorter axis of the oval hole is 4cm.

Max. Fiber Capacity: 24×4=96 fibers



Content of fiber optic splice closure

- 1.Outer fixing part (for aerial hang)
 - 2.Clamp
 - 3.Dome
 - 4.Base
 - 5.Splice tray
 - 6.Tray lid
 - 7.Shield continuity wires
 - 8.Valve
 - 9Shield continuity connector
 - 10.Sealing ring
 - 11.Inner fixing part
 - 12.Strength member
 - 13.Support ring on the base
 - 14.Velcro strip with one X flake
- Oval outlet cable seal kit:
- 1.Heat shrinkable sleeve
 - 2.Aluminum cable protection tapes
 - 3.Cleaning tissues
 - 4.Abrasive strip
 - 5.Branch off clip

Cable seal kit:

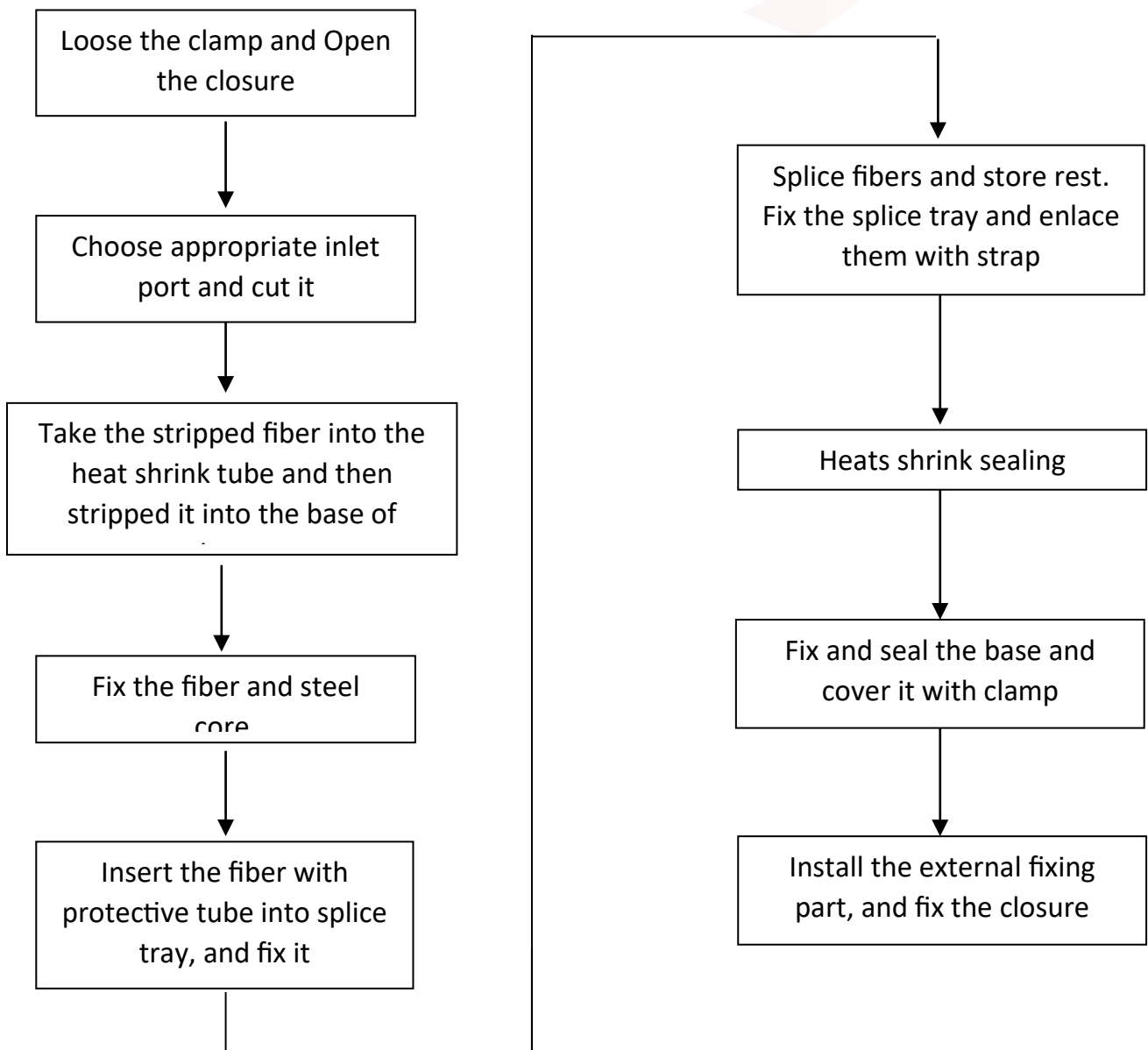
- 1. Aluminum cable protection tape
- 2. Heat shrinkable sleeve
- 3. Cleaning tissue
- 4. Abrasive strip

Other accessories:

- 1. Desiccant
 - 2. Shield continuity wires
 - 3. Connector
 - 4. Smouvs (splicing protection tubing)
 - 5. transparent tubes
- Tie wraps



3. Installation flow chart



Max. Fiber Capacity: 24×4=96 fibers

1. Working Temperature: -40 degrees centigrade~+70 degrees centigrade
2. Atmospheric Pressure: 70~150Kpa
3. Axial Tension: >2000N/1min
4. Stretching Resistance: 2500N/10 square centimetre(1min)
5. Insulation resistance: >2*10⁴MΩ
6. Voltage Strength: 15KV/1min, no arcover or breakdown
7. Pressure in the water: 50m/72hours
8. Splice tray with optical taking-in radius≥40mm. Low optical loss

Packing:(light goods)

4 sets of closures put into 1 outer carton:
61 cm*52*46=0.15 m³ (Outer carton size) Weight :17.6 KG (4 sets of closures)